

Additional info:

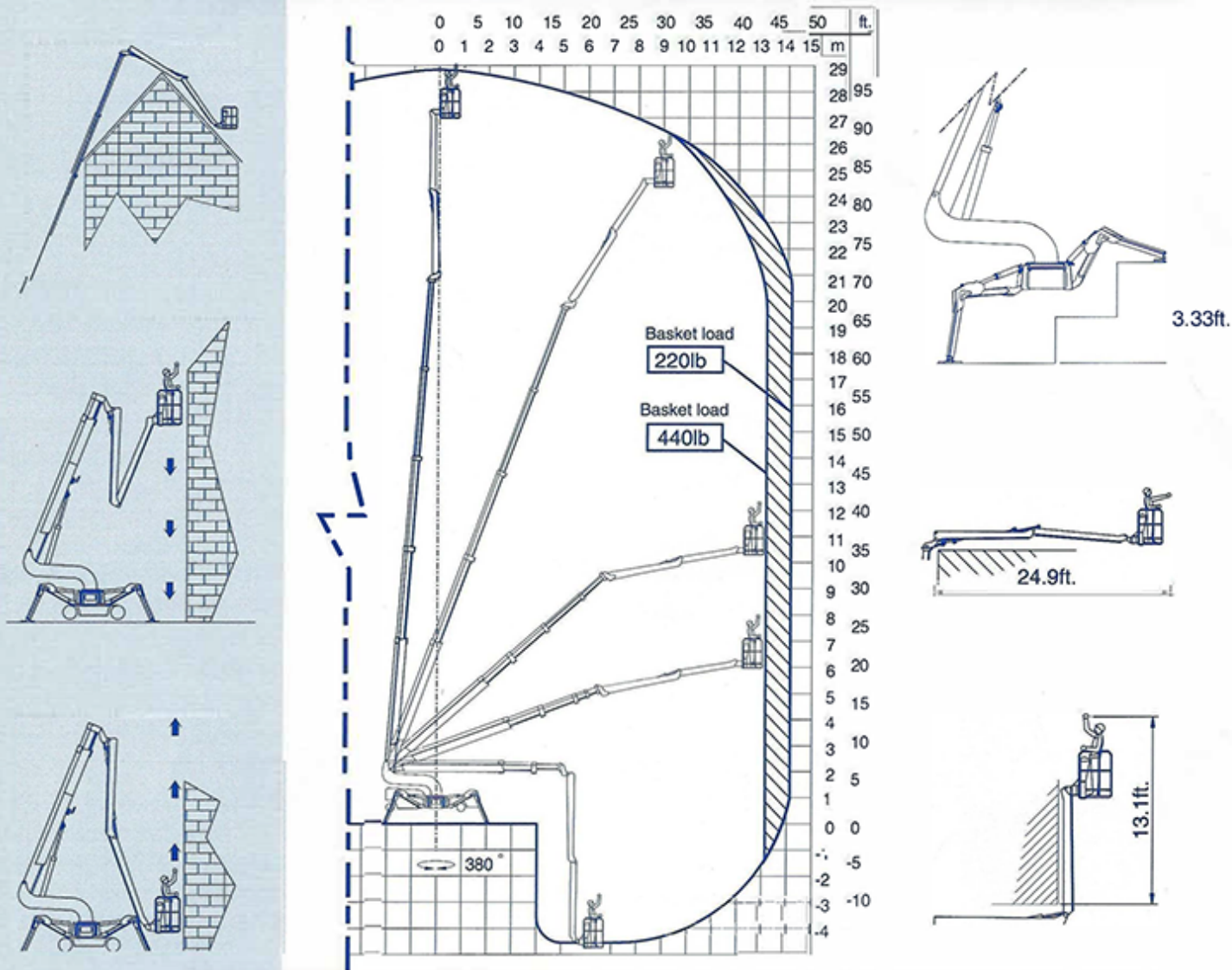
Weight and ground pressure:

Weight with standard equipment	7937 lbs
Max. ground pressure under 1 wheel	91 psi
Max. ground pressure under 1 outrigger plate	34.1 psi
Front wheel area (depending on wheel type)	1 x approx. 18.1 in ²
Rear wheel area (depending on wheel type)	2 x approx. 34.6 in ²



ReachMaster Falcon Falcon 95

Reach diagram — Optimized position



Weight and ground pressure:

High Access Solutions
2643 Gravel Drive
Fort Worth, TX 76118
817-243-6800

www.WeReachHigh.com

Weight with standard equipment

Max. ground pressure under 1 wheel

Max. ground pressure under 1 outrigger plate

Front wheel area (depending on wheel type)

Rear wheel area (depending on wheel type)

7937 lbs

91 psi

34.1 psi

1 x approx. 18.1 in²

2 x approx. 34.6 in²

All measurements are intended as a guide. Choice of equipment may change the mentioned measurements.


ReachMaster